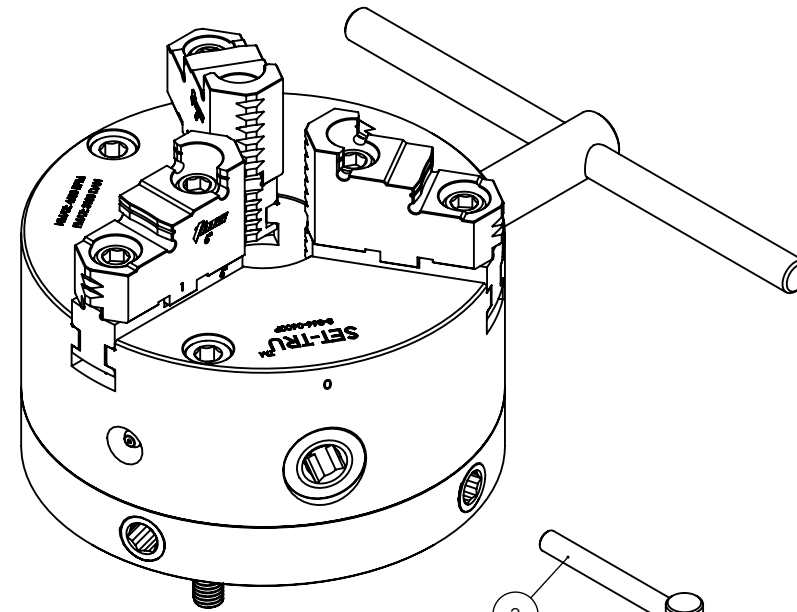
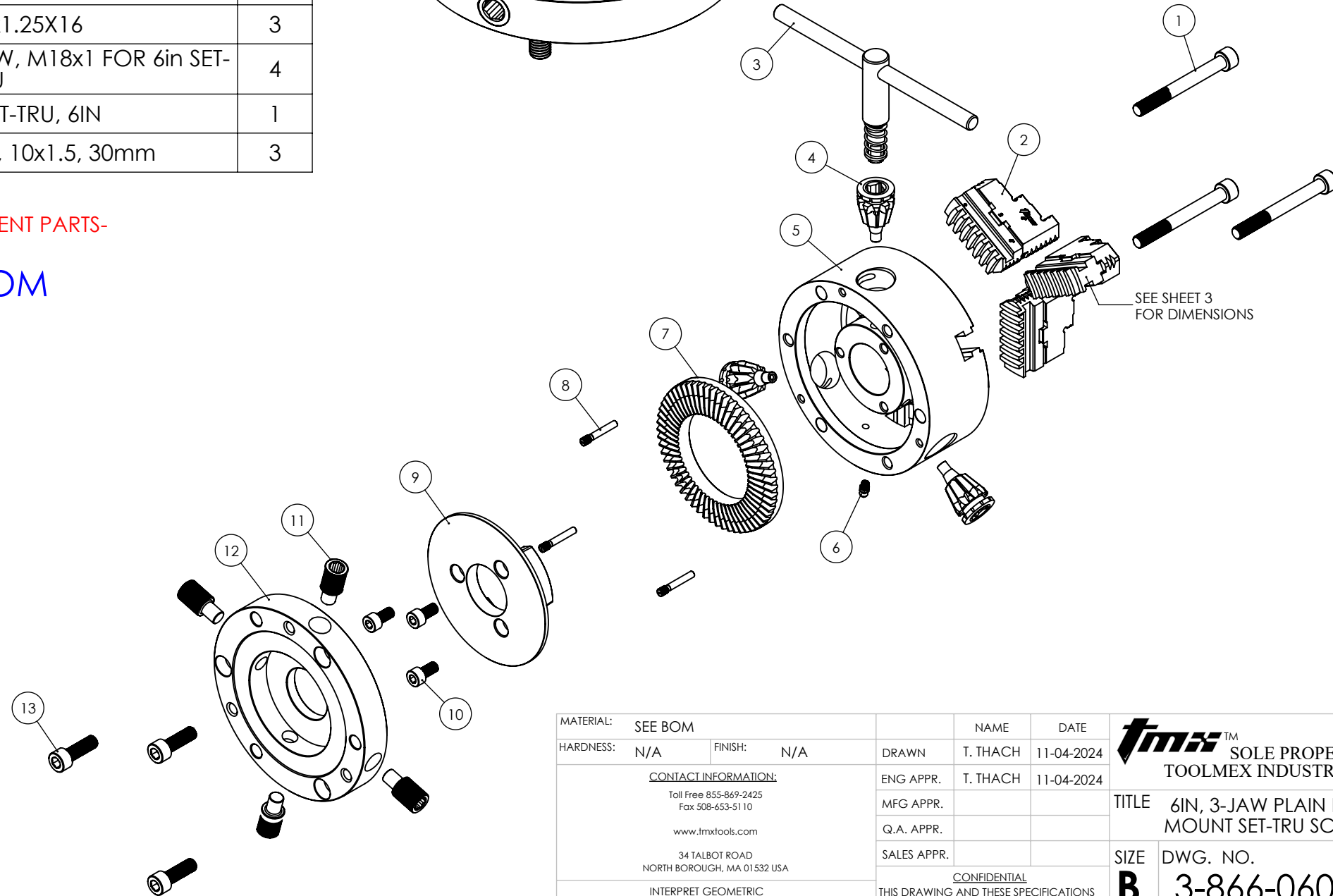


ITEM NO.	PART NUMBER	DESCRIPTION	QTY.
1	3-897-10090	MOUNTING BOLT, 10x1.5, 90mm	3
2	3-891-306P	FULL OEM JAW REPLACEMENT SET, 6IN, 3-JAW	3
3	3-889-008P	WRENCH FOR 6IN & 8IN SCROLL CHUCK	1
4	3-886-306P	PINION FOR 6IN SCROLL CHUCK	3
5	C-CK6-BDY3JFM	CHUCK BODY, 6IN	1
6	3-809-906P	FITTING, GREASE	1
7	3-887-306P	SCROLL PLATE FOR 6IN CHUCK	1
8	3-888-906P	PINION SCREW FOR 5IN&6IN CHUCK	3
9	C-CK6-COVER	PLATE, COVER, MACHINED	1
10	3-899-310P	SHCS, M8x1.25X16	3
11	3-897-606P	FINE ADJUSTMENT SCREW, M18x1 FOR 6in SET-TRU	4
12	C-CK6-MODULE	MODULE, SET-TRU, 6IN	1
13	3-897-10030	MOUNTING BOLT, 10x1.5, 30mm	3



-CLICK ON LINK BELOW FOR REPLACEMENT PARTS-

WWW.TOOLMEX.COM

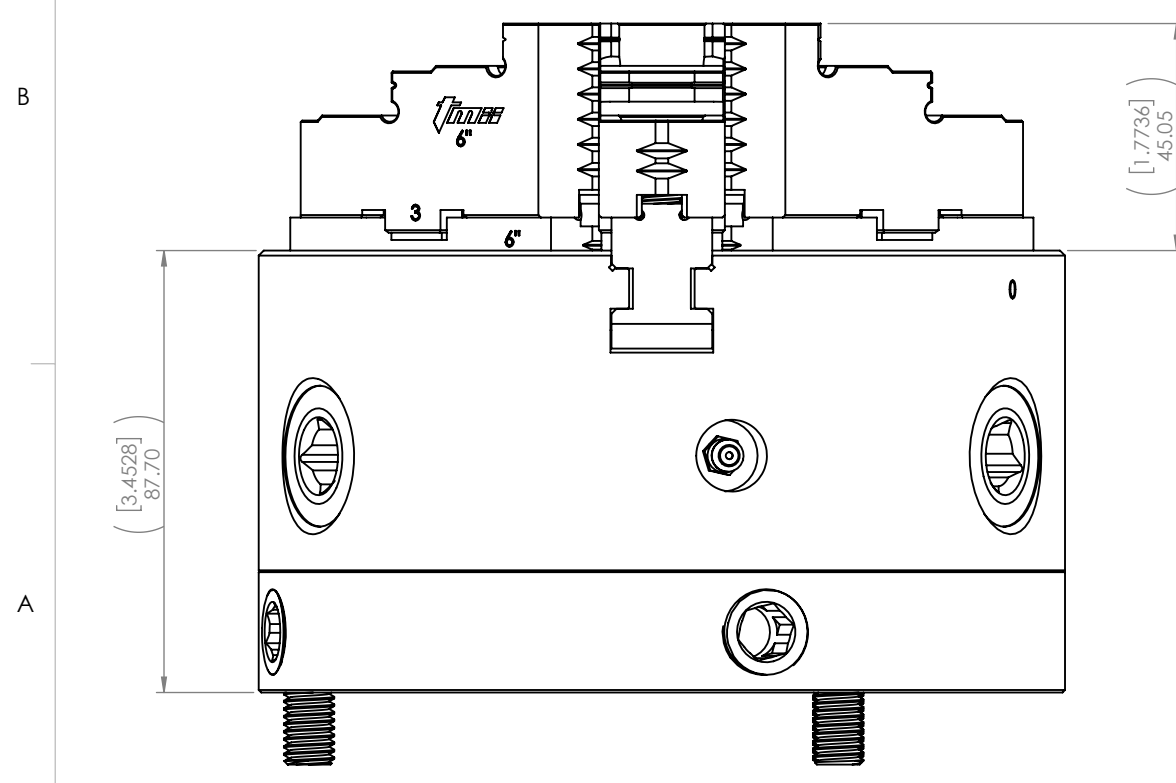
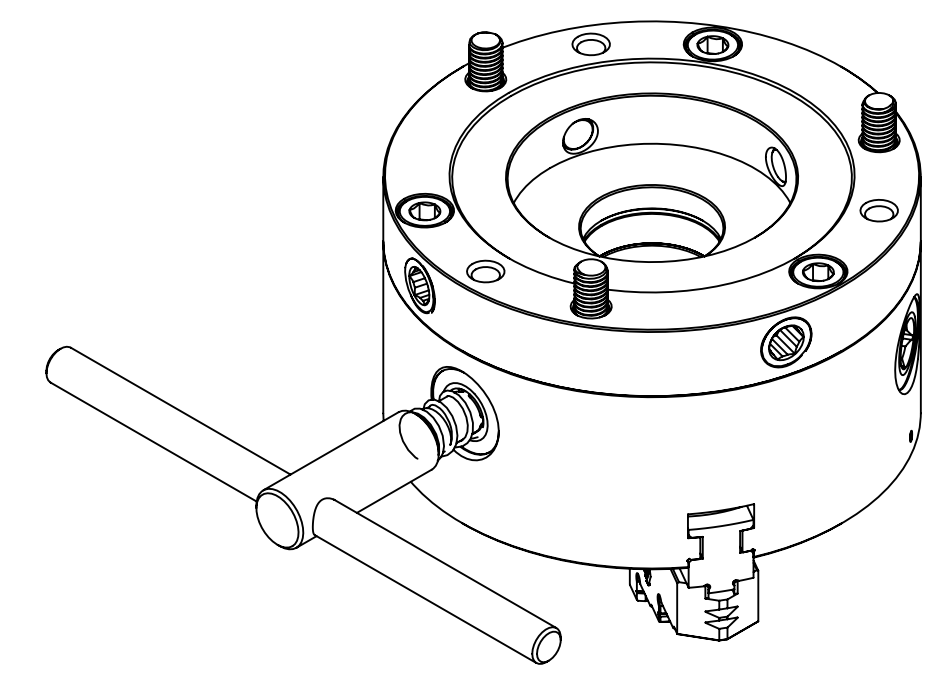
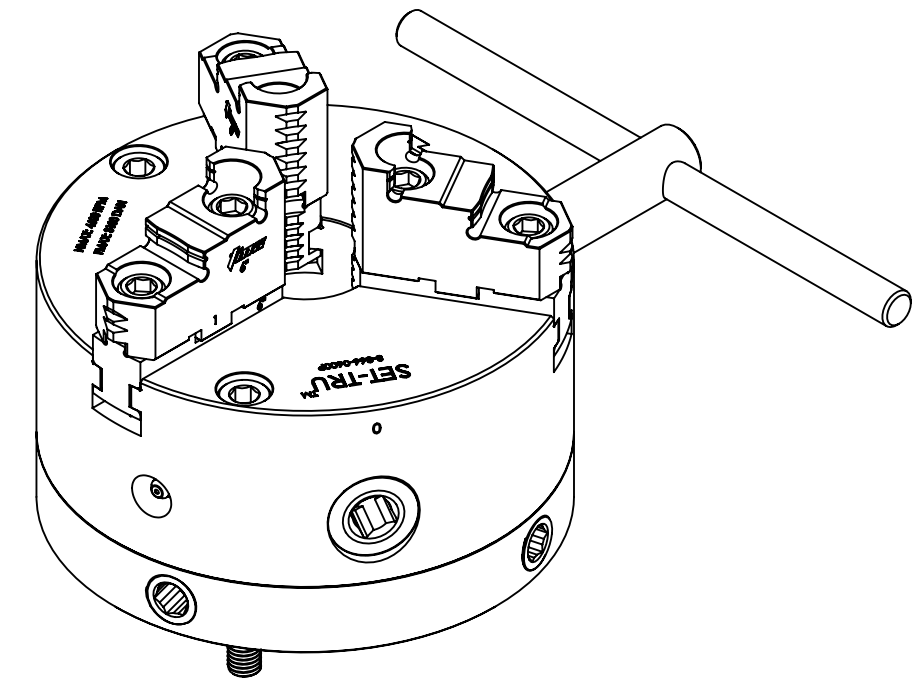
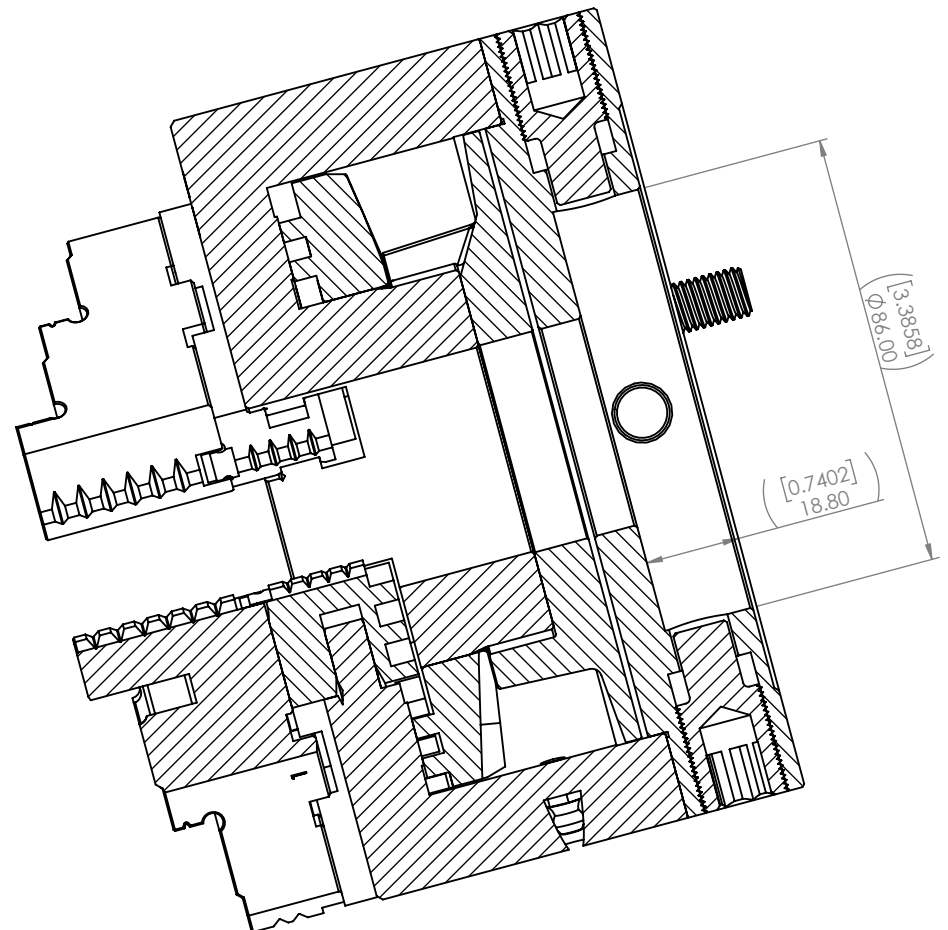
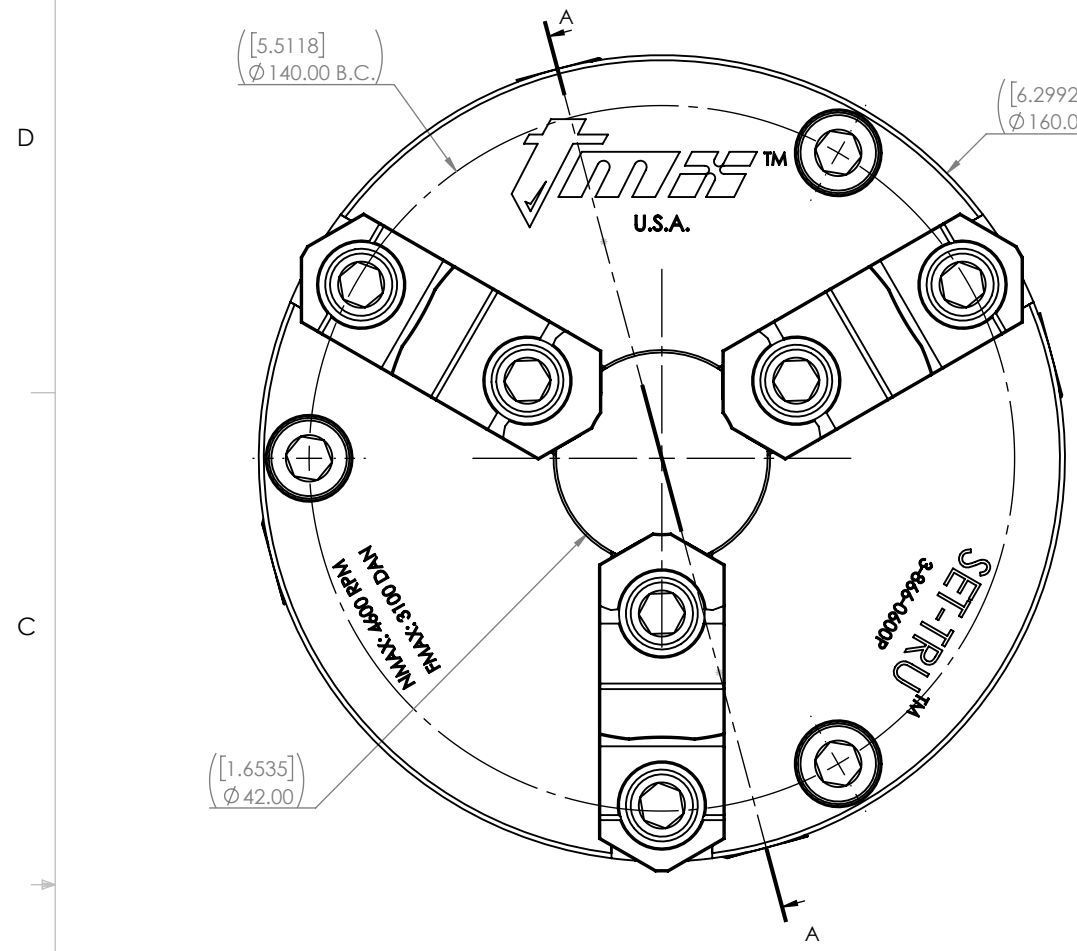


SELLING UNIT: EACH
 CHUCK TYPE: SET-TRU SCROLL
 CHUCK SIZE: 6IN
 BODY MATERIAL: FORGED STEEL
 NUMBER OF JAWS: 6
 JAW TYPE: 2 PIECES
 WEIGHT: 29 LBS
 MOUNT TYPE: FRONT
 GRIPPING FORCE: 3100 daN
 SPEED: 4600 RPM Max.

MATERIAL:	SEE BOM	NAME	DATE
HARDNESS:	N/A	FINISH:	N/A
DRAWN		T. THACH	11-04-2024
ENG APPR.		T. THACH	11-04-2024
MFG APPR.			
Q.A. APPR.			
SALES APPR.			
CONTACT INFORMATION: Toll Free 855-869-2425 Fax 508-653-5110 www.tmxtools.com 34 TALBOT ROAD NORTH BOROUGH, MA 01532 USA			
INTERPRET GEOMETRIC TOLERANCING PER: Y1999-2001		CONFIDENTIAL THIS DRAWING AND THESE SPECIFICATIONS ARE THE SOLE PROPERTY OF TOOLMEX INDUSTRIAL SOLUTIONS, AND SHALL NOT BE REPRODUCED, OR COPIED IN PART OR AS A WHOLE WITHOUT THE EXPRESS WRITTEN PERMISSION OF TOOLMEX INDUSTRIAL SOLUTIONS IS PROHIBITED.	
 THIRD ANGLE PROJECTION			

 TOOLMEX™ SOLE PROPERTY OF TOOLMEX INDUSTRIAL SOLUTIONS		
TITLE 6IN, 3-JAW PLAIN BACK FRONT MOUNT SET-TRU SCROLL CHUCK		
SIZE	DWG. NO.	REV
B	3-866-0600P	A
UNITS IN MILLIMETER		
DO NOT SCALE DRAWING		SHEET 1 OF 3

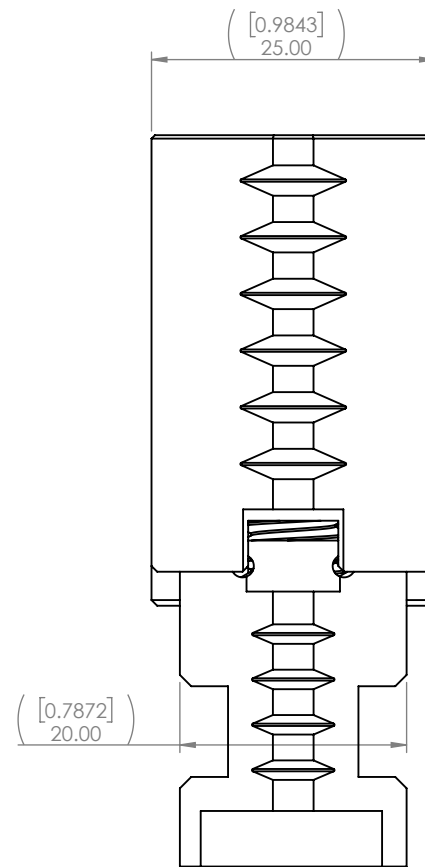
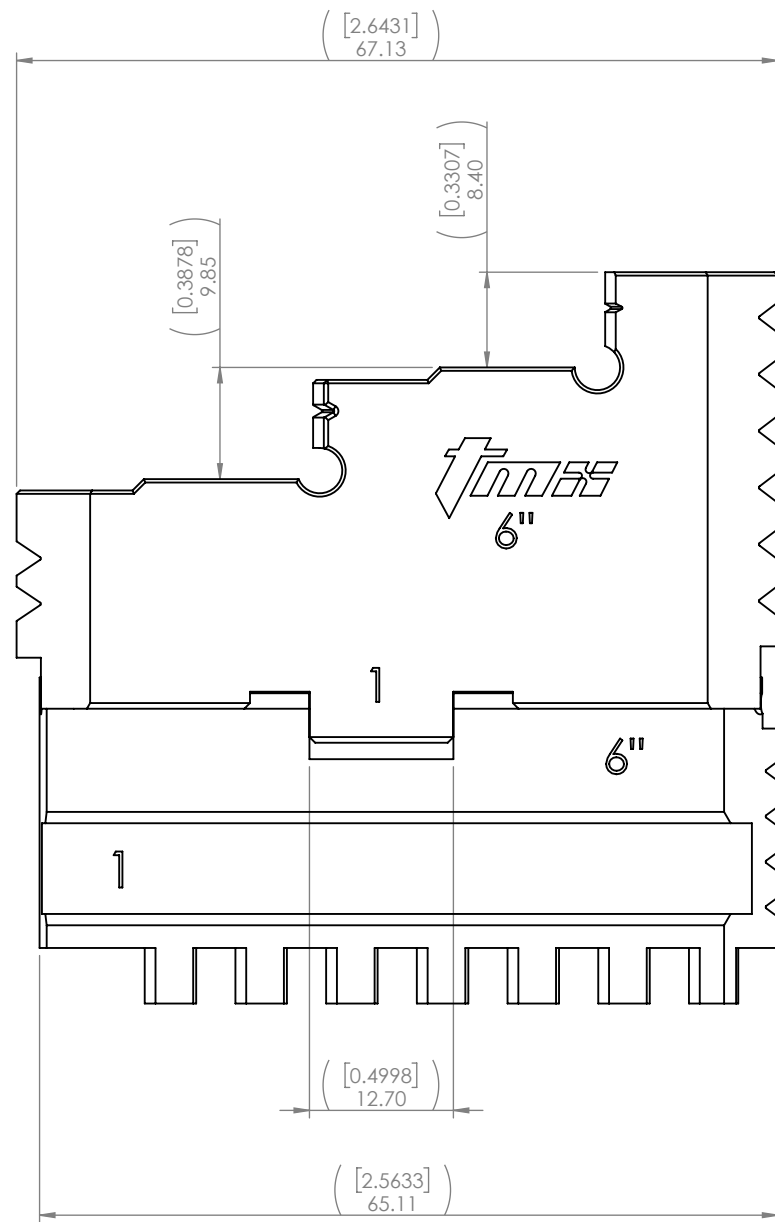
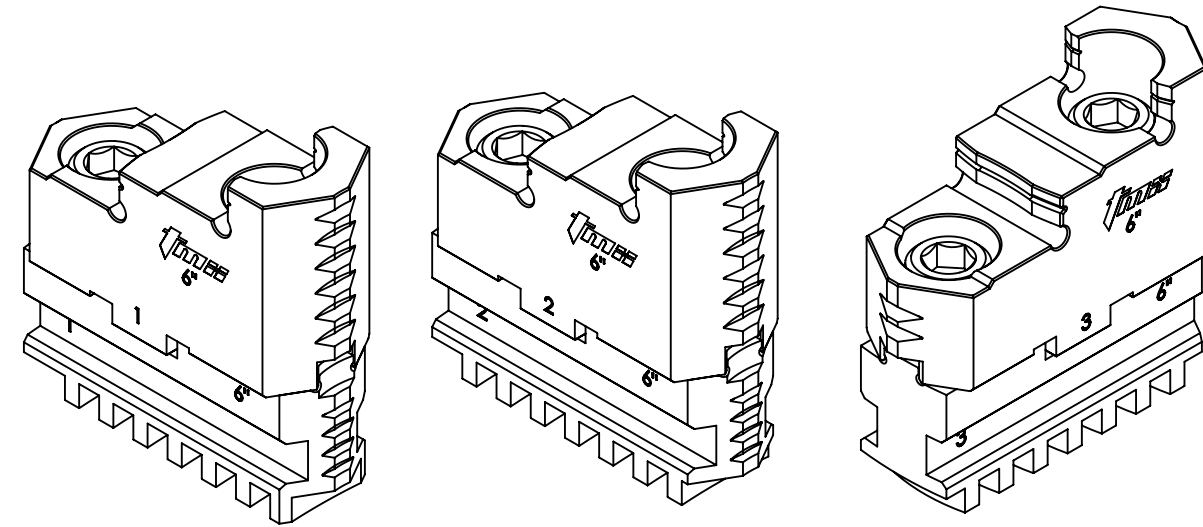
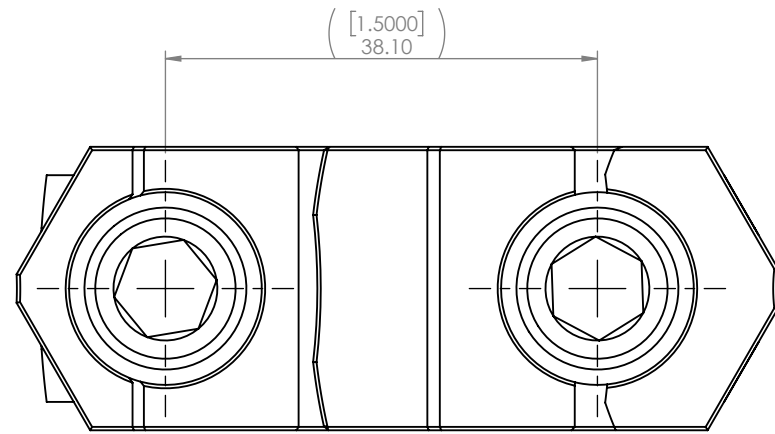
8 7 6 5 4 3 2 1



SECTION A-A

MATERIAL:	SEE BOM	NAME	T. THACH	DATE	11-04-2024
HARDNESS:	N/A	FINISH:	N/A	DRAWN	T. THACH
<p>CONTACT INFORMATION: Toll Free 855-869-2425 Fax 508-653-5110 www.tmxtools.com 34 TALBOT ROAD NORTH BOROUGH, MA 01532 USA</p>			ENG APPR.	T. THACH	11-04-2024
			MFG APPR.		
			Q.A. APPR.		
			SALES APPR.		
<p>INTERPRET GEOMETRIC TOLERANCING PER: Y1999-2001</p>			<p>CONFIDENTIAL THIS DRAWING AND THESE SPECIFICATIONS ARE THE SOLE PROPERTY OF TOOLMEX INDUSTRIAL SOLUTIONS, AND SHALL NOT BE REPRODUCED, OR COPIED IN PART OR AS A WHOLE WITHOUT THE EXPRESS WRITTEN PERMISSION OF TOOLMEX INDUSTRIAL SOLUTIONS IS PROHIBITED.</p>		
<p>THIRD ANGLE PROJECTION</p>			<p>SOLE PROPERTY OF TOOLMEX INDUSTRIAL SOLUTIONS</p>		
<p>TITLE 6IN, 3-JAW PLAIN BACK FRONT MOUNT SET-TRU SCROLL CHUCK</p>		SIZE DWG. NO.	<p>B 3-866-0600P</p>		REV
		<p>UNITS IN MILLIMETER</p>		<p>A</p>	
<p>DO NOT SCALE DRAWING</p>			<p>SHEET 2 OF 3</p>		

8 7 6 5 4 3 2 1



-CLICK ON LINKS BELOW FOR REPLACEMENT PARTS-

3-883-306P, HARD TOP JAWS, 6IN, 3-JAW 6 PC SET

3-885-306P, HARD MASTER JAWS, 6IN, 3-JAW 6 PC SET

MATERIAL:	SEE BOM	NAME:	T. THACH	DATE:	11-04-2024	SOLE PROPERTY OF TOOLMEX INDUSTRIAL SOLUTIONS	
HARDNESS:	N/A	FINISH:	N/A	DRAWN:	T. THACH		11-04-2024
CONTACT INFORMATION: Toll Free 855-869-2425 Fax 508-653-5110 www.tmxtools.com 34 TALBOT ROAD NORTH BOROUGH, MA 01532 USA				ENG APPR.:	T. THACH		11-04-2024
				MFG APPR.:			
INTERPRET GEOMETRIC TOLERANCING PER: Y1999-2001				Q.A. APPR.:			
				SALES APPR.:			
THIRD ANGLE PROJECTION				CONFIDENTIAL THIS DRAWING AND THESE SPECIFICATIONS ARE THE SOLE PROPERTY OF TOOLMEX INDUSTRIAL SOLUTIONS, AND SHALL NOT BE REPRODUCED, OR COPIED IN PART OR AS A WHOLE WITHOUT THE EXPRESS WRITTEN PERMISSION OF TOOLMEX INDUSTRIAL SOLUTIONS IS PROHIBITED.		TITLE 6IN, 3-JAW PLAIN BACK FRONT MOUNT SET-TRU SCROLL CHUCK	
				SIZE B	DWG. NO. 3-866-0600P	REV A	
				UNITS IN MILLIMETER		DO NOT SCALE DRAWING	
						SHEET 3 OF 3	